



## ECOGRAFO PORTATILE USB + WiFi ULTRASOUND

- Double Head
- Convex
- Linear
- Phased
- 3 in 1
- Color Doppler



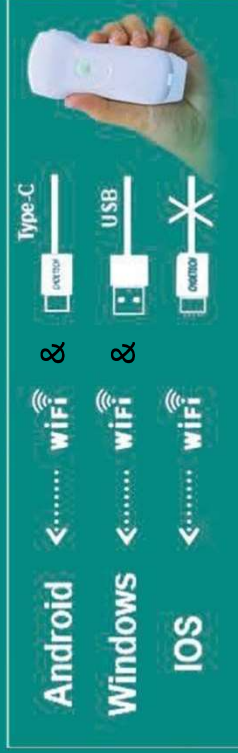
**MPaHS**  
Medical Provisions  
and Health Services

MPaHS Srl  
Via delle Cappuccine 3/1 - 16128 Genova  
T. 010 8939950 - F. +39 010 8935891  
E-mail: [info@mpahs.com](mailto:info@mpahs.com) - [www.mpahs.com](http://www.mpahs.com)

# Sonda USB&Wi-Fi 3 in 1

può essere collegato a un dispositivo Windows/Android/iOS

(tablet, smartphone, PC ecc.) tramite WiFi o cavo USB.



Freq:  
7,5/10MHz  
Profondità:  
20-100 mm  
Impronta: L25

**Lineare  
+Cardiaco**

Freq:  
2,5/5MHz  
3,5/5MHz  
Profondità:  
90-160 mm  
90-305 mm  
Raggio: R45



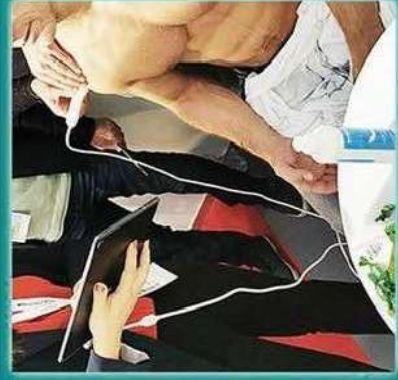
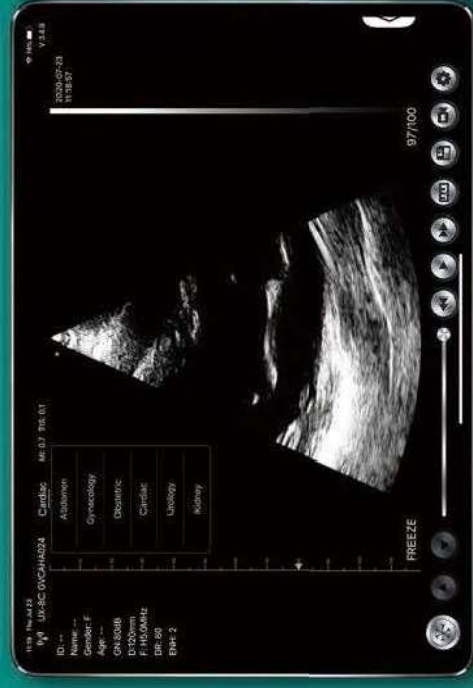
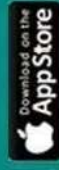
125 mm  
Peso 90 g

USB Tipo-C

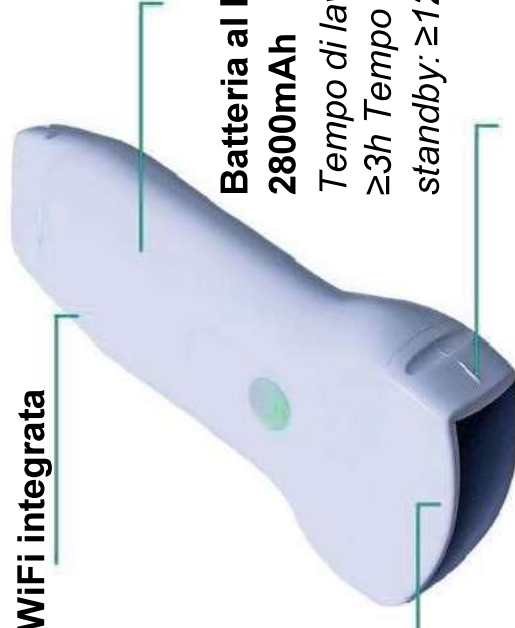


*È possibile eseguire la scansione in qualsiasi momento e in qualsiasi luogo, ad esempio in una clinica, in un reparto ospedaliero, in un pronto soccorso o in una sala operatoria. Applicazioni: Addome, ostetricia e ginecologia, cardiaco, rene, urologia, mammella, tiroide, chirurgia, vascolare, pediatria, carotide.*

Scarica il nostro software per  
ultrasuoni da App Store / Google  
Play



Sonda del segnale WiFi integrata



Batteria al litio  
2800mAh

Tempo di lavoro:  
≥3h Tempo di  
standby: ≥12h

Modalità: B, B+M,  
Color Doppler, PW,  
Power Doppler

Supporto per il lavoro durante la ricarica

## Software Controls

- Supporto per la modifica e la stampa dei rapporti
  - Cinese, Inglese, Russo, Italiano, Spagnolo, Portoghese (Brasile)
  - GN (guadagno), D (profondità), ENH (miglioramento), DR (gamma dinamica), F (frequenza), FocusPos, PRF, WF, Mode, 8
- TGC, Biopsy .Annote, Pagina sinistra/destra/su/giu

## Measurement

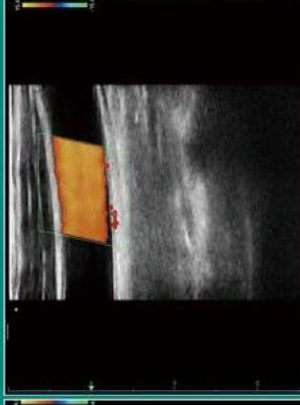
Lunghezza, Area/Circonferenza, Angolo, Traccia  
DistanzaGA(CRL,BPD,GS,FL,HC,AC) EFW(BPD,FL), Frequenza cardiaca,  
Tempo, Distanza, Velocità, Frequenza cardiaca(2), S/D, Profondità



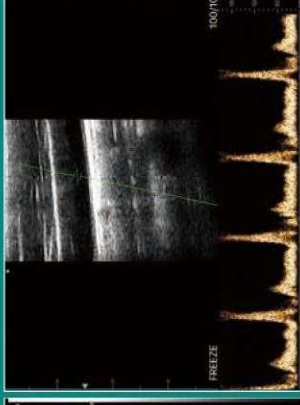
# Clinical images



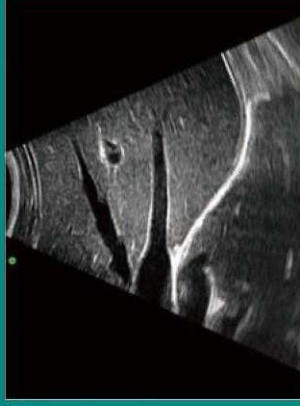
Thyroid C Mode



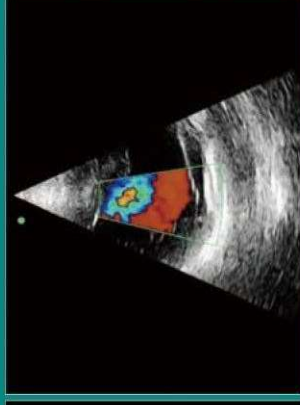
Carotid C Mode



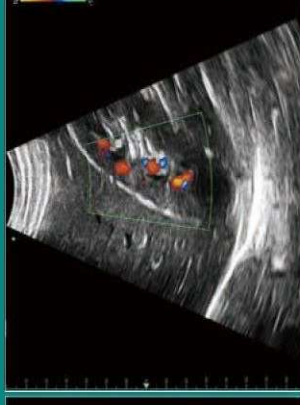
Vascular PW Mode



Liver B Mode



Cardiac C Mode



Kidney C Mode

